

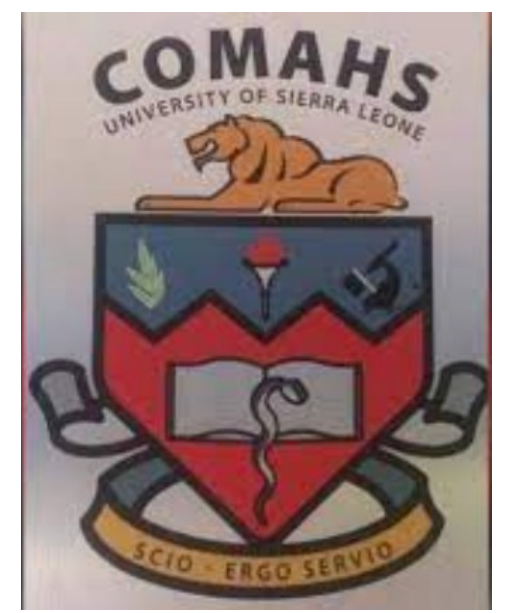
# Understanding the health and wellbeing of young people in informal settlements in Freetown, Sierra Leone: A community-based participatory study



**Samuel Saidu, PhD in Global Health, Year 1**  
**ARISE Consortium funded PhD research program**

Supervisory team

Dr Joanna Raven, Liverpool School of Tropical medicine  
Dr Lana Whittaker, Liverpool School of Tropical medicine  
Dr Haja Ramatulai Wurie, College of Medicine and Allied Health Sciences, University of Sierra Leone



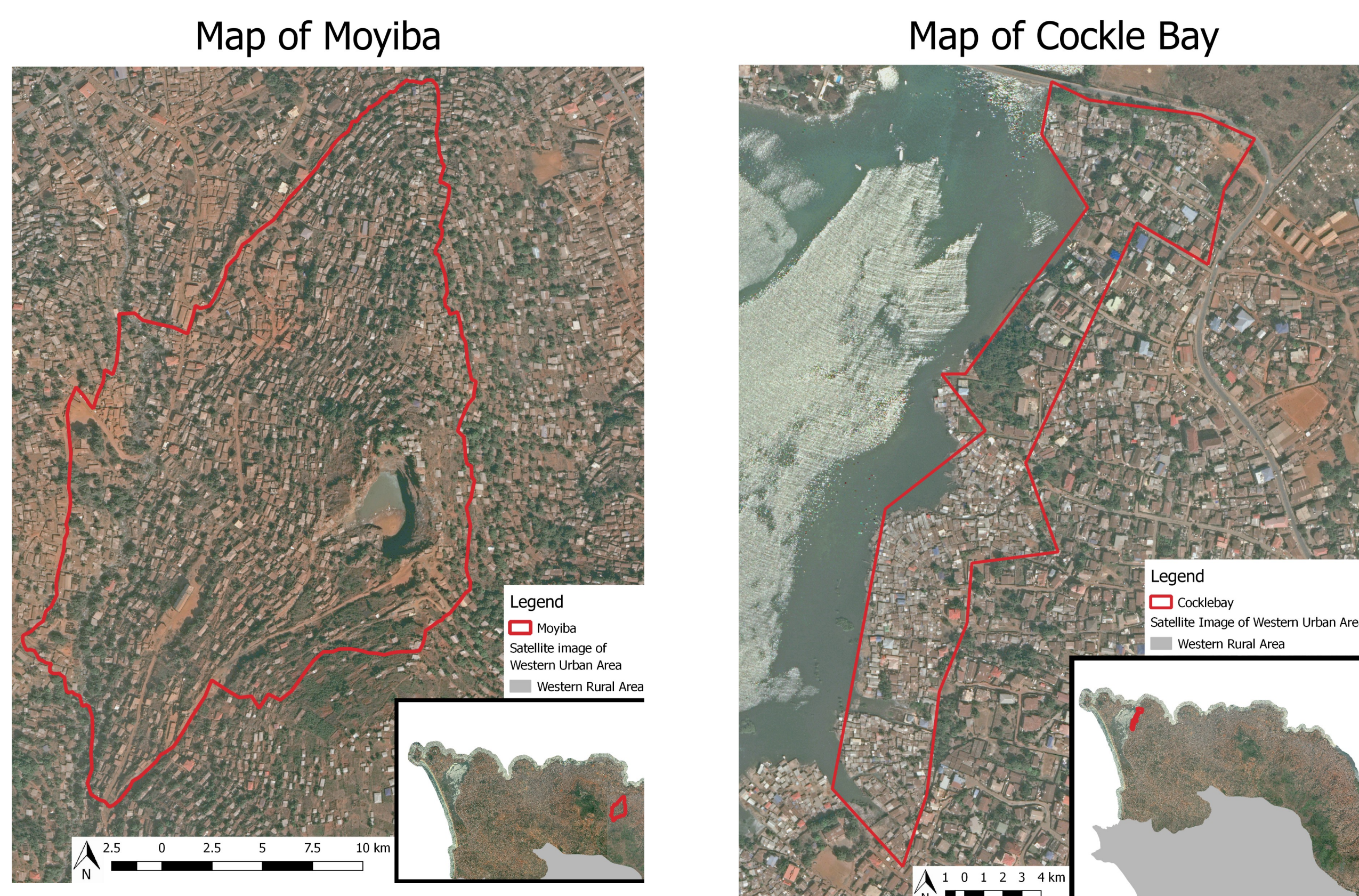
## Background

The world population is becoming increasingly urban with an expected growth of over 60% by 2050<sup>1</sup>. Young people account for a large proportion of the population in low and middle-income countries particularly in informal settlements<sup>2</sup>, and face several challenges to their health and well-being, including good housing, basic healthcare services, and education<sup>1,2,3,4</sup>. Yet, little research has been conducted into their health and well-being and in consequence young people's health and wellbeing is not well understood. Most previous research has been far from participatory, excluding young people from the planning, implementation and dissemination of results.

## Study Sites

The study sites will be Cackle Bay and Moyiba communities, which are informal settlements in the Western Urban district of Freetown, Sierra Leone. They were selected purposively to ensure maximum variation in context and to understand how spatial and social diversities within informal settlements like geography, context and intersectionality shape health inequalities and wellbeing desires among young people.

## Overview map<sup>6</sup> of Moyiba and Cackle Bay communities



## General Research Objective

To explore and document the understanding, experience and response towards health and wellbeing of young people<sup>5</sup> living in informal settlements in Freetown, Sierra Leone.

## Specific Research Objective

- To document how young people in informal settlement in Freetown, Sierra Leone understand health and wellbeing.
- To understand what affects and determines the health and wellbeing of young people in informal settlements in Freetown, Sierra Leone.
- To understand how youth in informal settlements in Freetown, Sierra Leone cope and try to improve their health and wellbeing, including seeking health care.
- To co-produce with youth ways to improve their health and wellbeing as they live in informal settlements in Freetown, Sierra Leone.

## The role of co-researchers in the study

The engagement of community co-researchers is also about recognizing the value of each person's contribution to the co-creation of knowledge in a process that is not only practical, but also collaborative and empowering. Co-researchers are those engaged in the research as active partners and may be patients or users of services, members of health-related interest groups or other communities of identity or place. For this work, co-researchers will be recruited from within the current ARISE team of co-researchers who have been already identified by the community-based organization CODOHSAPA and FEDURP within the ARISE consortium in Sierra Leone.

## Data collection tools, sampling and population



Narrative interview with young person with disabilities. A conversation with a young person with a limb absent as a result of car accident. He was a public transport (Poda Poda) driver from informal settlement.

Discussion with young people in Moyiba making Venn diagram of the governance actors in their community. As young men, they seem to better understand their governance system compared to young women.



## Next Steps

Data of youth age 18-35 years have been collected from the ARISE hub and the data from 15-17 years will be collected separately on the PhD data after ethical approval. The co-production of knowledge with young people will be done at the end of the primary data analysis where the preliminary information will be shared, discussed and validated with community youth within the communities where the data were collected.

## References

1. Muhamad, S et al (2016) 'Towards a more equal city: framing the challenges and opportunities', *GROWTH*, 2015, p. 2030.
2. Fraser, B. (2011) 'Growing up in Rio's favelas', *The Lancet*, 377(9779), pp. 1735-1736.
3. Alcock, G. et al (2015) 'Examining inequalities in uptake of maternal health care and choice of provider in underserved urban areas of Mumbai, India: a mixed methods study', *BMC pregnancy and childbirth*
4. Zerbo, A. et al (2020) 'Vulnerability and everyday health risks of urban informal settlements in Sub-Saharan Africa', *Global Health Journal*.
5. Kyobutungi, C. et al (2008) 'The burden of disease profile of residents of Nairobi's slums: Results from a Demographic Surveillance System', *Population health metrics*, 6(1), pp. 1-8.
6. Bright, D. (2012) 'Ministry of youth and sport, Sierra Leone, National Youth Policy, 2012', *Website of Ministry of Youth Affairs*. Available at: [https://www.youthpolicy.org/national/Sierra\\_Leone\\_2003\\_National\\_Youth\\_Policy.pdf](https://www.youthpolicy.org/national/Sierra_Leone_2003_National_Youth_Policy.pdf).
7. Arial map. GIS mapping work of ARISE Sierra Leone study sites. Designed by Daphnee Govers for ARISE project

## Contact



@samuelsaidu0  
@ARISEHub



samuel.saidu.35



samuel-saidu-5754a17b/

Samuel Saidu, PhD in Global Health, Year 1  
ARISE Consortium funded PhD research program  
[330872@lstmed.ac.uk](mailto:330872@lstmed.ac.uk)  
+23278555104

